

the HUMDOG *howler*

APRIL 2009



“All the Poop that’s fit to Scoop...”

PRESIDENT	Cindy Williams	442-6809
VICE PRESIDENT	Marilyn Backman	822-9274
SECRETARY	Paula Cunningham	443-9685
TREASURER	Mark Nichols	725-7970
PAST PRESIDENT	Susan Hutchison	443-0439

WAGS... Page 6

**Phasing Out Food
Lures & Rewards...page 4**

Guess Who!

Several members correctly
named our March

Mystery dog as CHARLIE

Since there was more than one correct guess a name will be drawn for the gift certificate at the meeting. See page 7 for this month’s Mystery Dog. Congrats to Trish Morgan. Her name was drawn for our March winner.



HUMDOG APRIL 2, 2009 MEETING

1. Call to Order 7:05 p.m. by President Cindy Williams

Members present: P. Johnson, P. Cunningham, R. Kessler, C. Davis, S. Pavlich, J. Morgan
B. Morgan Lewis, S. Hutchison, T. Morgan, M. Nichols, C. Williams

2. Guests in attendance: Cory Enns, Debbie Enns.
3. New member application: Cory Enns
4. No new members voted in.
5. March minutes were approved without correction or change
6. Secretary's Report- Mail received: card in memory of Simon with a \$20 donation to the Terri Lockett Memorial Fund.
7. Treasurer's Report- read by Treasurer Nichols for Feb and March 2009 (see newsletter for written report)
8. Committee Reports

- a. Spay/Neuter Committee- 3 new inquiries came in and 4 that were completed had been paid. Telephone meeting with HAF took place (date, participant name?) Decision regarding funding from HAC is pending.

- b. Current and on-going Classes – Pat Johnson reported:

- Classes Graduated 3/23, 2009

7 pm, Puppy- Judy Sample - 13

- Ongoing - 6 pm, Puppy- Pat Johnson

6 pm, Intermediate- Susan Hutchison

7 pm, Basic- Pat Johnson

8 pm, Basic Plus- Inge Goetz-Cordova

8 pm, Basic- Pat Johnson

- New Classes started 4/30, 2009

7 pm, Puppy –Judy Sample – 14 new, 2 repeating

- c. CPE- 2009 trial dates have been approved by CPE (Friday Aug 14 through Sunday Aug 16) Premium will be revised for Candy's course preferences. Fullhouse will be run Friday. Jumpers will be the first classes run both Saturday and Sunday. Entries will open around the 12th or 15th (of June?) and will close around the 5th of August. Hotels and the new RV Park will need to be verified as "dogs OK."

9. Librarian's Report – No report

10. Newsletter Report – Paula requested that Mystery Dog guesses be submitted in writing to assure that no one's guess got overlooked. She also requested to award Trish with the winning guess for the January Mystery dog since she identified Radley correctly at the February meeting. There was no disagreement to this request. Several members correctly named Skidder as the February MD. Our guest, Cory Enns, drew

Trish's name as the winner. Paula also is requesting photos, articles, announcements and WAGS for insertion to the newsletter as well as requests and suggestions to improve our newsletter.

11. Old Business-

- a. 2009 Dog Expo- Pat reported on the results of the follow-up questionnaires that participants filled out (see newsletter for written report) Thank you notes were sent to booth participants and raffle donors. All equipment been returned.
Mark reported that no bill for the speaker system had been received @ April 2nd
Date of 2010 EXPO has been scheduled for Sunday, February 21st.
- b. Pet Fair – the NADAC trial was cancelled. HUMDOG will have agility demo as initially planned plus games. A \$50 insurance rider will be required. Pet Fair is April 18th at the Farm Store.
- c. Mark purchased 4 thumb drives for the club to back up data and for ease of transferring data.
- d. Mark also set up and paid for website. Domain name is HUMDOG.org
- e. Issue of charitable giving was revisited and discussed.
Susan Hutchison made a motion to donate \$350 each to Canine Companions for Independence, Dogs for the Deaf and Guide Dogs for the Blind. Cheryle Davis seconded. Motion carried.

12. New Business-

- a. HUMDOG participating in WOOFSTOCK was discussed. Agility demo probably not workable since public dogs pose a potential hazard.

13. Announcements- Susan Hutchison's daughter will be going to Australia to compete in a triathlon. Susan brought in items to raise funds- wrist bands for \$5 and T shirts for \$20.
Tricia Morgan is now an evaluator for the Foundation for Service Dog Support, Inc. (www.sdsupport.org)

Meeting adjourned 8: 15 pm

Respectfully submitted by Paula Cunningham,
April 20, 2009

Please note: The February and March Treasurer's reports are being sent to the membership in a separate file due to the large number of pages.

Phasing Out Food Lures and Rewards

Submitted by Inge Goetz-Cordova

Phasing Out Food Lures

1. Luring –as you use food in your hand to get the dog to sit, down, stand etc. you give the appropriate command – preferably right as the dog gets into position;
2. The dog has paired your hand movement with the food lure (not quite yet so with your verbal command)
3. Work on fading the hand signal – say the command, use hand signal with treat.
4. Say the command and/or hand signal without food in your hand; as soon as the dog is sitting, standing etc. praise and give a food reward. Continue fading the hand signal.

Phasing Out Food Rewards

1. Give your dog a command and as soon as he/she sits reward with food.
2. Watch your dog how quickly he executes your command, start rewarding only the better performances
3. Ask your dog to do more than one command without food, like have him sit and then down. Don't forget to verbally praise for each exercise (use of a marker word is very helpful here – 'yes').
4. Praise should always be a second or so before you give the food reward. This way the Praise in itself becomes reinforcing to the dog (you have paired praise with food – think of Pavlov and the salivating dog). By giving treats randomly after praise you strengthen the behavior.
5. Randomizing – the reward is not predictable to the dog. You need to make sure that you don't give the reward every 3rd time, or every 4th time. Animals learn to 'count' pretty quickly, and once they learned that the reward only comes after so many times, they will slow their responses to the unrewarded commands. A little trick for this to help you is to write out numbers 1 through 10 on a piece of paper, cut them out individually and then pull out a number from your pocket. So this is like the lottery effect. At the beginning you need to make sure so you stay within # 1-5. Then as the dog gets better you can up the difficulty.

Little food for thought

I recently read an article on command vs. cue –and in short the interpretation of the word command really means that we give an order and expect immediate compliance.

Nowadays trainers often switch to use the word cue instead. Partially to get away from the thought process that the dog always immediately understands what we are asking of him (like if he speaks our language). Then the author gave some examples of humans vs. dogs missing 'cues'.

Here are just a couple:

Continued, page 5

Inattention: the driver of a car was changing a CD, checking the rearview mirror, or talking on the phone and didn't see the light change. Dog: somebody dropped something somewhere and the dog turned his head to see what it was; momentary distraction.

Overriding Instinct: I really liked this one. You are a young, healthy unattached man sitting at a red light. Standing on the corner of the intersection is a bevy of attractive women. The light turns green, but you would not know it. Dog – any hard-wired instinct that kicks in. Like a bird dog flushing, or a Basset hound picking up a scent.

Insufficient practice: You are driving a standard shift, stopped at the top of a steep hill with a car right on your rear. You are not very skilled yet and you know you are going to roll back when you take your foot of the brake. Dog: is in a situation beyond his abilities, he had not had enough practice under the circumstances.

This is not to say that we should allow our dogs to not comply, but we also have to look at if we have given them enough training so that they really understand what we are asking of them. Lets not ask more of our dogs then what we as humans are able to do.

How do you know if your dog is being rewarded (enjoys) with your praise, either with verbal or petting. How does he show it? It is important to recognize whether your dog actually is truly being rewarded by your praise or pet.



Katie Kessler

Wags...

Jill Otto welcomes a new puppy- a Petit Basset Griffon Vendeen..but you can just call it a PBGV!

Pat tells us that Kacee "finally" earned her MX at Albany, OR!

Susan reports a successful debut for Tessa at the Albany, OR show. She earned her first leg in FAST on Friday and took a 4th place Q in Standard. Her weekend was sadly cut short by a visit from "Mother Nature."

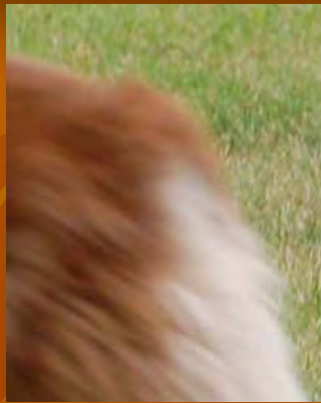
Sally Dunn's Venture has qualified for the Australian Terrier Club of America's VERSATILITY AWARD. It will be presented at the ATCA's annual banquet.

CONGRATULATIONS ALL!!!

GUESS WHO

Can you guess the name of Our April Mystery Dog?
Please submit in writing to assure that your entry does not get left out.

???



???

Paula E. Cunningham

Images of Man's Best Friend...and the occasional cat

During May original works are on display at Ramone's Bakery in Old Town, Eureka. Please stop by!

My studio will also be open June 6-7 and 13-14 From 11-4. Hope to see you then!



443-9685 nooage@pacbell.net p.o.box 6312 eureka, ca 95502

Please send WAGS, submissions, suggestions and questions to:



Paula Cunningham

P.O.Box 6312

Eureka, CA 95502

Newsletter editor

443-9685

nooage@pacbell.net

HumDOG
P.O. Box 6733
Eureka, CA 95502



Next HumDOG Meeting
Thursday May 7, 2009
7 pm – under the Grand Stand
Redwood Acres Fairgrounds